

ELEC/HYD & HYDRAULIC CRANES

EH5520/H5520



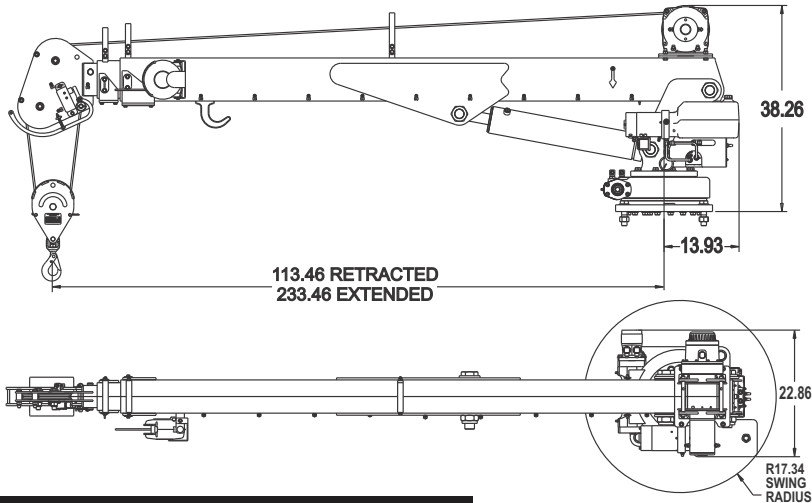
MODEL	TYPE	Crane Rating (ft*lb)	REACH	Max Lift (lbs)	BOOM ELEVATION
EH5520	<i>Elec/Hyd - ST*</i>	30,000	20'	5,500	-13° +78°
H5520	<i>Hydraulic - ST*</i>	30,000	20'	5,500	-13° +78°

**Available only in Short Tower (ST) configuration.*

Maintainer

800-831-8588 | www.maintainer.com

specifications



standard features

- **Planetary Winch:** Hoist drum and wire rope located outside of boom for improved operator visibility
- **Anti Two-Block:** Standard on all models
- **System Overrides:** All crane functions (EH includes hydraulic pump activation)
- **580° Rotation**
- **OSHA 1910.180/ANSI B30.5 Compliant**
- **Safety Holding Valves:** Counterbalance valves are machined into cylinders
- **Wireless Remote Control:** Allows operator to be more mobile and maintain a safe distance from loads
- **Bolt Down Pattern:** 14.75" x 14.75", 1"-8UNC grade 8 bolts
- **Base Plate:** 18"x 18"
- **Hydraulic Extension:** full to 20'
- **Battery Isolator:** Protects chassis batteries from excessive crane draw while allowing charging
- **EH Hydraulic System:** Self-contained, 12 volt DC motor with thermal safety switch
- **H Hydraulic System Requirement:** Open or closed center: 9 gpm, 2500 psi
- **Crane Weight:** 1450 lbs.
- **105' of 5/16" cable**

options

- **Toggle/trigger** wireless remote control
- **Tethered** remote control

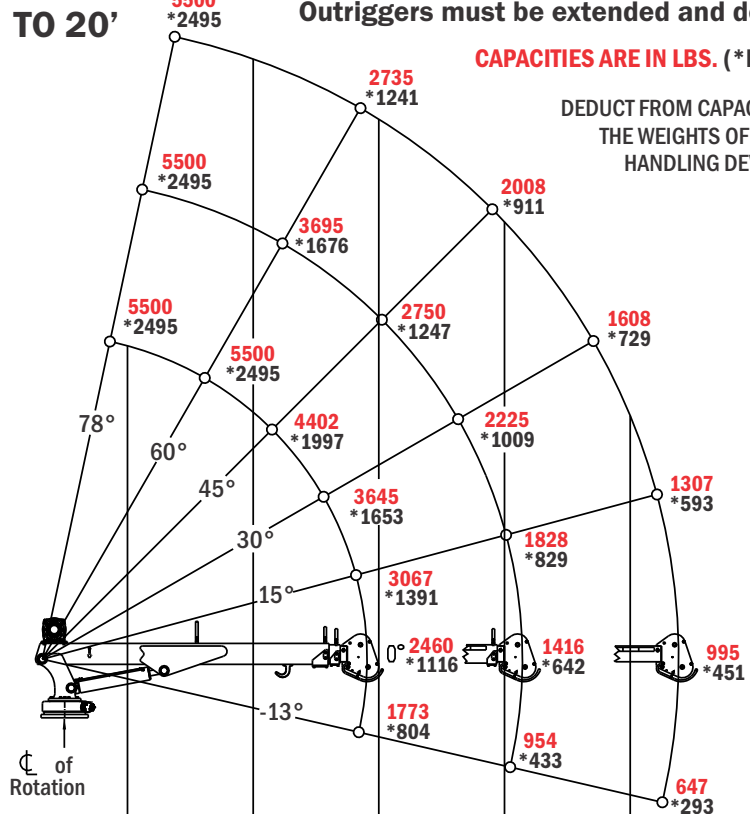
EH5520/H5520 CRANE CAPACITY CHART | 30,000 FT*LB CRANE RATING

HYDRAULIC EXTENSION TO 20'

Max single line capacity is 3,000 lbs. (1361 KG)
For greater loads, use 2 part line
Outriggers must be extended and down

CAPACITIES ARE IN LBS. (*KGS)

DEDUCT FROM CAPACITIES
THE WEIGHTS OF LOAD
HANDLING DEVICES



Distance in feet (meters) from boom pivot joint

2' (0.61m) 4' (1.22m) 6' (1.83m) 8' (2.44m) 10' (3.05m) 12' (3.66m) 14' (4.27m) 16' (4.88m) 18' (5.49m) 20' (6.10m)

Radius in feet (meters) from centerline of rotation to load

