

ELEC/HYD & HYDRAULIC CRANES

EH4520/H4520



Crane shown is EH520

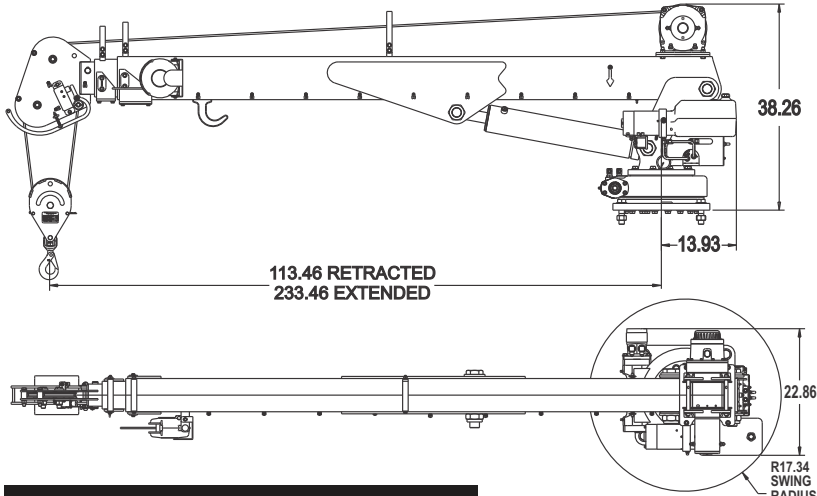
MODEL	TYPE	Crane Rating (ft*lb)	REACH	Max Lift (lbs)	BOOM ELEVATION
EH4520	<i>Elec/Hyd - ST*</i>	20,000	20'	4,500	-13° +78°
H4520	<i>Hydraulic - ST*</i>	20,000	20'	4,500	-13° +78°

**Available only in Short Tower (ST) configuration.*

Maintainer

800-831-8588 | www.maintainer.com

specifications



standard features

- **Planetary Winch:** Hoist drum and wire rope located outside of boom for improved operator visibility
- **Anti Two-Block:** Standard on all models
- **System Overrides:** All crane functions (EH includes hydraulic pump activation)
- **580° Rotation**
- **OSHA 1910.180/ANSI B30.5 Compliant**
- **Safety Holding Valves:** Counterbalance valves are machined into cylinders
- **Wireless Remote Control:** Allows operator to be more mobile and maintain a safe distance from loads
- **Bolt Down Pattern:** 14.75" x 14.75", 1"-8UNC grade 8 bolts
- **Base Plate:** 18"x 18"
- **Hydraulic Extension:** full to 20'
- **Battery Isolator:** Protects chassis batteries from excessive crane draw while allowing charging
- **EH Hydraulic System:** Self-contained, 12 volt DC motor with thermal safety switch
- **H Hydraulic System Requirement:** Open or closed center: 9 gpm, 2500 psi
- **Crane Weight:** 1450 lbs.
- **105' of 5/16" cable**

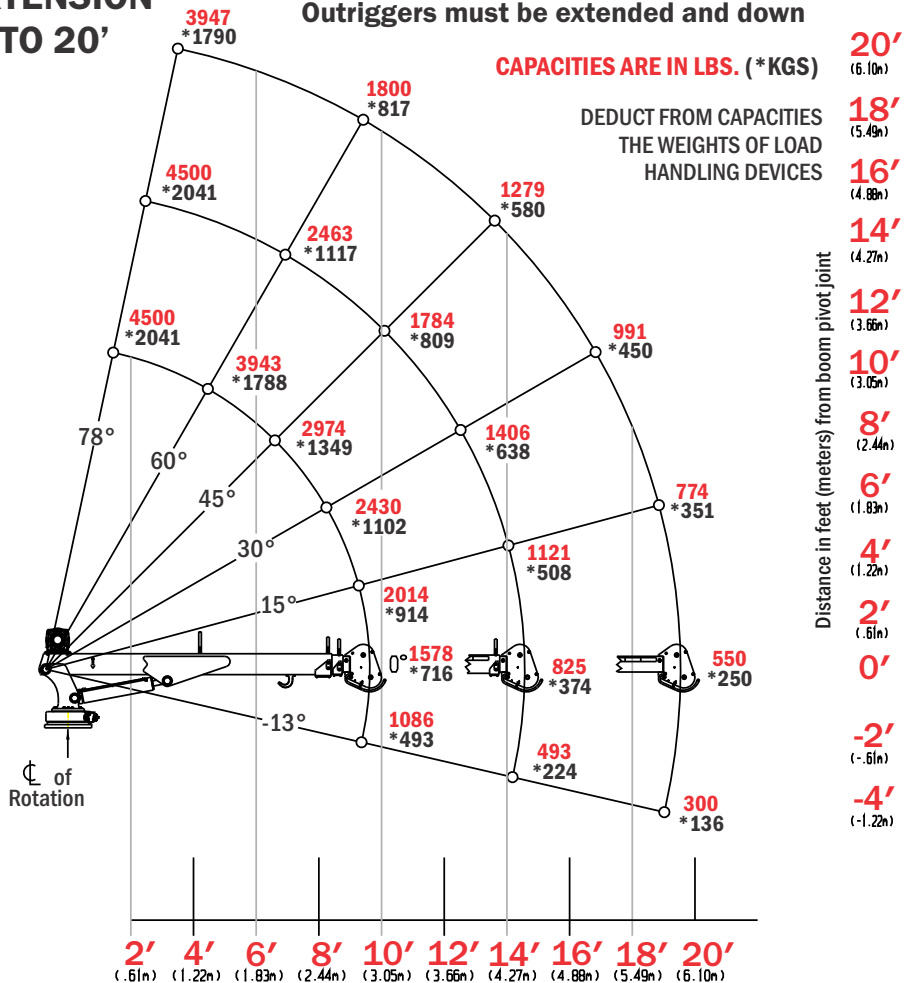
EH4520/H4520 CRANE CAPACITY CHART | 20,000 FT*LB CRANE RATING

HYDRAULIC EXTENSION TO 20'

Max single line capacity is 3,000 lbs. (1361 KG)
For greater loads, use 2 part line
Outriggers must be extended and down

CAPACITIES ARE IN LBS. (*KGS)

DEDUCT FROM CAPACITIES THE WEIGHTS OF LOAD HANDLING DEVICES



options

- **Toggle/trigger** wireless remote control
- **Tethered** remote control

www.

Maintainer.com

EH4520 - 2-17

SCAN & VISIT OUR WEBSITE

