

SCENE COMMANDER APPLICATIONS



CRANE

- Boat
- Four-Wheeler
- Rescue tool storage container
- Generator
- Cribbing storage container
- Large animal rescue/retrieval
- Equipment PODS
- Confined space (equipment)
- Vehicle stabilization

LIGHT

- Scene lighting
- Crane operation
- Cave-in
- Under bridge
- Tactical
- Trench rescue
- Building collapse rescue

CAMERA

- Tactical
- Observation, on-scene & remote
- Surveillance
- Crane operation

PLUS...MANY MORE APPLICATIONS TO FIT YOUR RESCUE SITUATIONS



Available Configurations

- Crane Only: EH3516, EH4520, or EH5520
- Crane/Light
- Crane/Camera
- Crane/Light/Camera



SCENE COMMANDER



Revolutionize Your Rescue



www.mcbfire.com



MAINTAINER CUSTOM BODIES

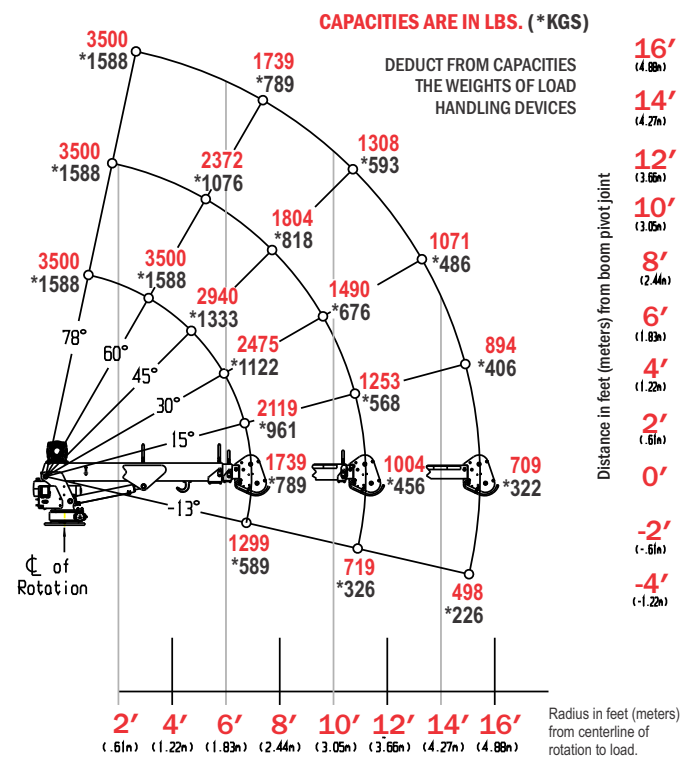
909 S. EAST STREET | ROCK RAPIDS, IA 51246 | 800-843-4288 | mcbfire.com



SPECIFICATIONS

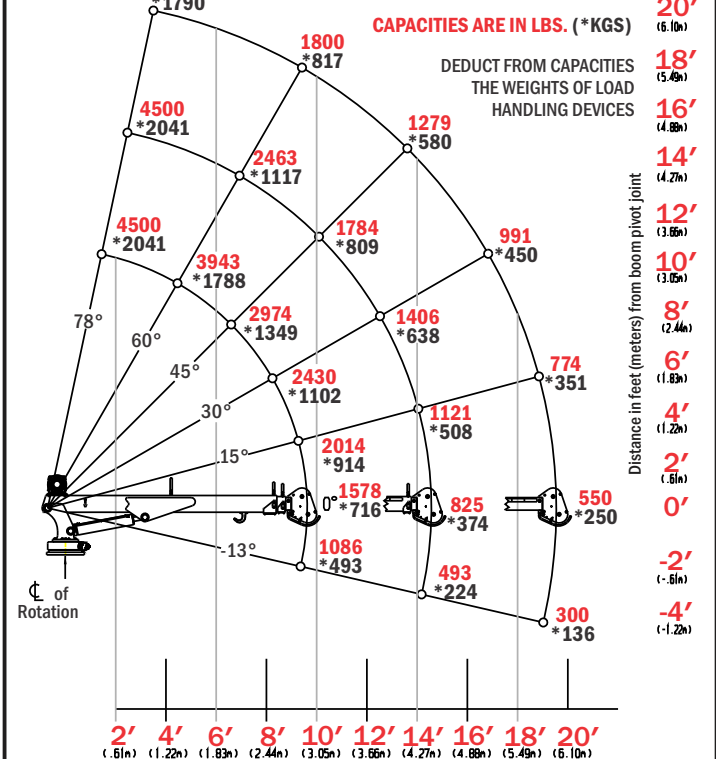
EH3516/H3516 CRANE CAPACITY CHART | 15,000 FT*LB CRANE RATING

HYDRAULIC EXTENSION TO 16' Max single line capacity is 1,940 lbs. (880 KG) For greater loads, use 2 part line Outriggers must be extended and down



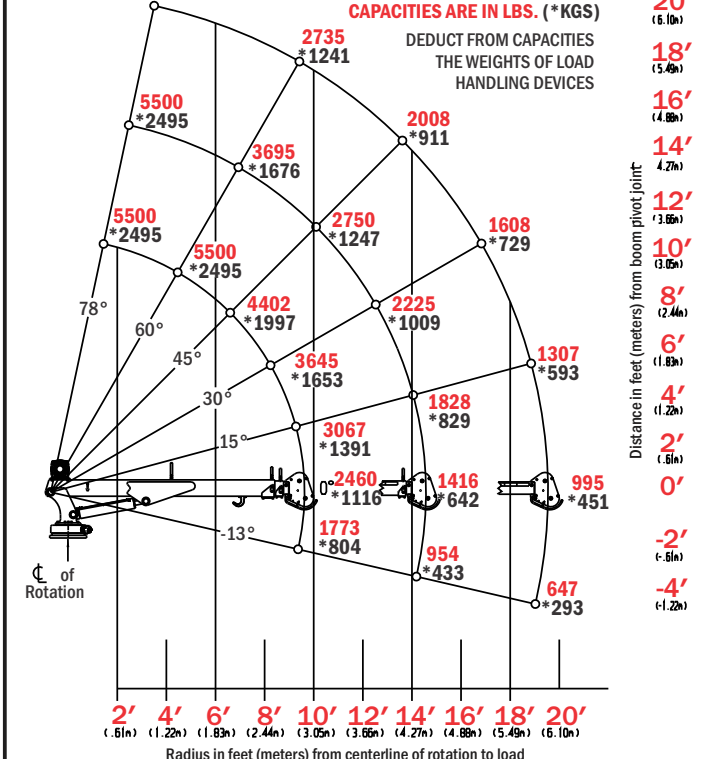
EH4520/H4520 CRANE CAPACITY CHART | 20,000 FT*LB CRANE RATING

HYDRAULIC EXTENSION TO 20' Max single line capacity is 3,000 lbs. (1361 KG) For greater loads, use 2 part line Outriggers must be extended and down



EH5520/H5520 CRANE CAPACITY CHART | 30,000 FT*LB CRANE RATING

HYDRAULIC EXTENSION TO 20' Max single line capacity is 3,000 lbs. (1361 KG) For greater loads, use 2 part line Outriggers must be extended and down



OUTRIGGER PACKAGES

- Manual out, and manual crank down
- Manual out, and hydraulic up/down
 - Includes electric/hydraulic power package, and 2 on/off momentary remotely mounted switches
- Hydraulic out, and hydraulic up/down
 - Includes electric/hydraulic power package, and 3 on/off momentary remotely mounted switches



STANDARD FEATURES

- **Planetary Winch:** Hoist drum and wire rope located outside of boom for improved operator visibility
- **Anti Two-Block:** Standard on all models
- **System Overrides:** All crane functions (EH includes hydraulic pump activation)
- **580° Rotation** on 4520 & 5520 models, **478° Rotation** on the 3516 model
- **OSHA 1910.180/ANSI B30.5 Compliant**



- **Safety Holding Valves:** Counterbalance valves are machined into cylinders
- **Wireless Remote Control:** Allows operator to be more mobile and maintain a safe distance from loads

- **Backup Tethered** remote control also provided
- **Bolt Down Pattern:** 14.75" x 14.75", 1"-8UNC grade 8 bolts (14.75" x 14.75" or 11.5" x 14.75" on 3516 model)
- **Base Plate:** 18" x 18"
- **Hydraulic Extension:** full to 20' on 4520 & 5520 models, 16' on the 3516 model
- **EH Hydraulic System:** Self-contained, 12 volt DC motor with thermal safety switch
- **H Hydraulic System Requirement:** Open or closed center: 9 gpm, 2500 psi
- **Crane Weight:** 1450 lbs. on 4520 & 5520 models, 1030 lbs. on the 3516 model
- **105' of 5/16" cable** on 4520 & 5520 models, **90' of 1/4" cable** on 3516 model

AVAILABLE OPTIONS

REMOTE CONTROLLED LED SPOT/FLOOD LIGHTS:

Spotlights will flood your work site or rescue scene with powerful light that lets you get the job done quickly and safely. With a remote control feature, you can easily rotate, tilt, and direct the light where it is needed. Currently configured for 12 volt, 20 amp operation. Models are available that provide 40,000 to 80,000 lumens.



WIRELESS CAMERAS: Adding a camera to your crane or spotlight will allow you to view areas you might never have been able to see or reach before. Video can be transmitted wirelessly to your truck or remote device. Several models are available, including night vision systems that allow for day and night operations.



BATTERY ISOLATOR: Protects chassis batteries from excessive crane draw while allowing charging.