

ELEC/HYD & HYDRAULIC CRANES

EH3516/H3516



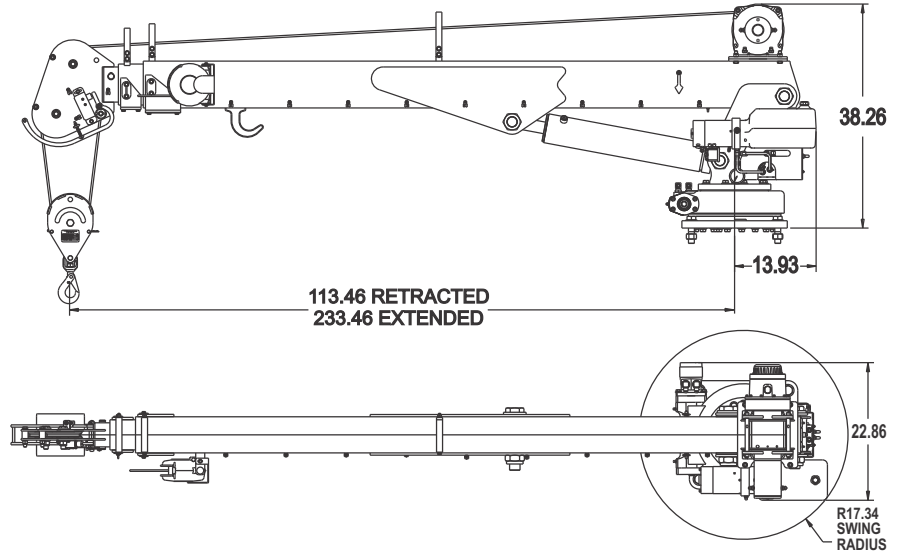
MODEL	TYPE	Crane Rating (ft*lb)	REACH	Max Lift (lbs)	BOOM ELEVATION
EH3516	<i>Elec/Hyd - ST*</i>	15,000	16'	3,500	-13°+78°
H3516	<i>Hydraulic - ST*</i>	15,000	16'	3,500	-13°+78°

**Available only in Short Tower (ST) configuration.*

Maintainer

800-831-8588 | www.maintainer.com

specifications



standard features

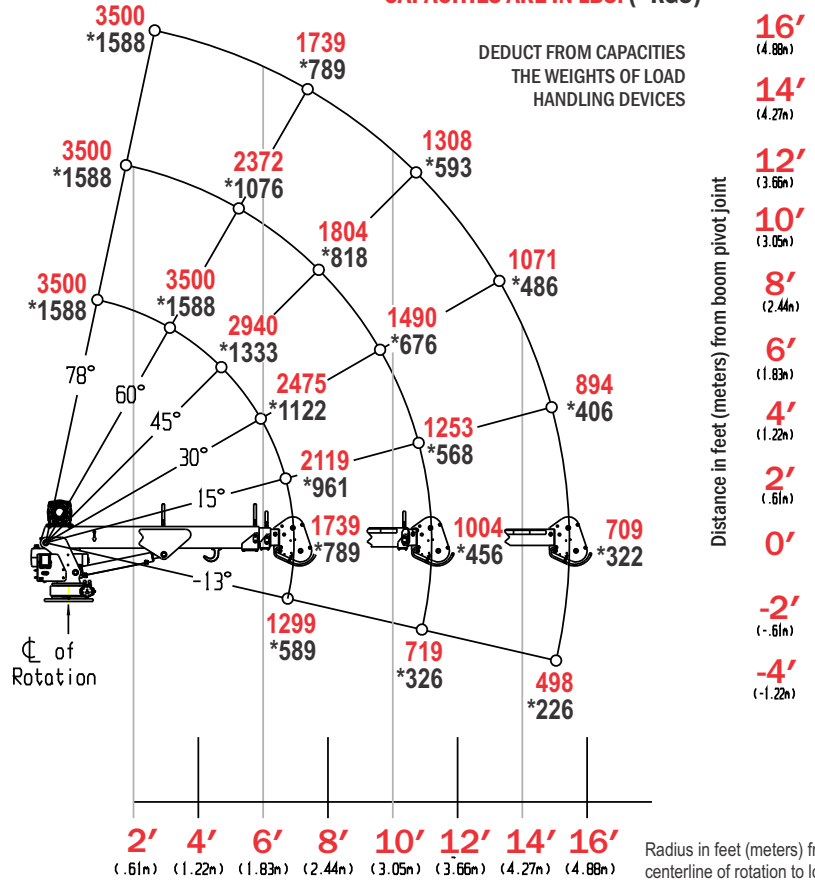
- **Planetary Winch:** Hoist drum and wire rope located outside of boom for improved operator visibility
- **Anti Two-Block:** Standard on all models
- **System Overrides:** All crane functions (EH includes hydraulic pump activation)
- **478° Rotation**
- **OSHA 1910.180/ANSI B30.5 Compliant**
- **Safety Holding Valves:** Counterbalance valves are machined into cylinders
- **Wireless Remote Control:** Allows operator to be more mobile and maintain a safe distance from loads
- **Bolt Down Pattern:** 3/4-10UNC grade 8 bolts, 14.75" x 14.75" or 11.5" x 14.75"
- **Base Plate:** 18"x 18"
- **Hydraulic Extension:** full to 16'
- **EH Hydraulic System:** Self-contained, 12 volt DC motor with thermal safety switch, 4 gpm @ 50 psi
 - **Optional Battery Isolator** protects chassis batteries from excessive crane draw while allowing charging.
- **H Hydraulic System Requirement:** Open or closed center: 9 gpm, 2500 psi
- **Crane Weight:** 1030 lbs.
- **90' of 1/4" cable**

EH3516/H3516 CRANE CAPACITY CHART | 15,000 FT*LB CRANE RATING

HYDRAULIC EXTENSION TO 16'

Max single line capacity is 1,940 lbs. (880 KG)
For greater loads, use 2 part line
Outriggers must be extended and down

CAPACITIES ARE IN LBS. (*KGS)



options

- **Toggle/trigger** wireless remote control
- **Tethered** remote control

www.

Maintainer.com

EH3516 - 9-17

SCAN & VISIT
OUR WEBSITE

